



WHOLE HOUSE HEPA FILTRATION SYSTEMS



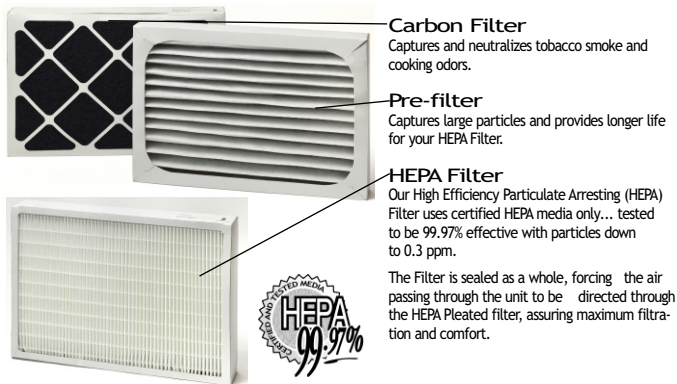
Model HP500
DUCTING FLAIRS™
MOUNTING SYSTEM APPLICATION

CPH-1000
WHOLE HOUSE HEPA AIR PURIFIER

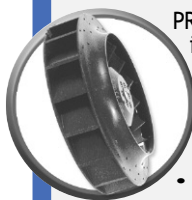
Model CHP-1000
SHOWN WITH OPTIONAL COLLAR MOUNT KIT
(CMK500)



High Efficiency Quality Filters
for optimal performance of your filtration system



German Engineered
motorized impellers



PREMIERONE uses motors that are particularly advantageous in the construction of the PREMIERONE HEPA 500. They are compact and the integration of the motor with the impellers permits ideal balancing of the whole unit. Being mounted in the airstream, the motor is continually cooled, allowing for extended lubricant life of the bearings.

- Backward-inclined motor blades for high performance at low consumption
- Permanent lubrication of PSC motors
- Mechanical protection of IP44
- Factory balanced
- High airflow efficiency
- Thermally protected
- Steel Ball Bearings Construction

Ducting Flairs™
mounting system

The PREMIERONE HEPA Plenum Systems are designed for one-person installation. Ducting Flairs™, integrated within the unit installs in 3 easy steps saving time and effort. Simply cut two holes in the return air plenum, align the unit and fold in the Ducting Flairs™ to hold the unit in place. No external ducting is required for the return air plenum mount installation.

Features

- Multi-stage filtration process
 - 2" Pre-filter / 1/2" Carbon Filter
 - 2.5" H.E.P.A. Filter
- Gasketed Filter Rack
- Thermally Insulated Cabinet
- Dual Speed Operation
- Installs on any heating/cooling systems
- Compact Installation
- APP Design
- Backward Inclined Motor Blades
- Permanent Lubrication of PSC Motors
- Ducting Flairs Mounting System
- Modular Construction with Access Door
- Removable Electrical Power Cord
- Door Safety Switch
- 7 year Limited Warranty on the Motorized Impeller

Benefits

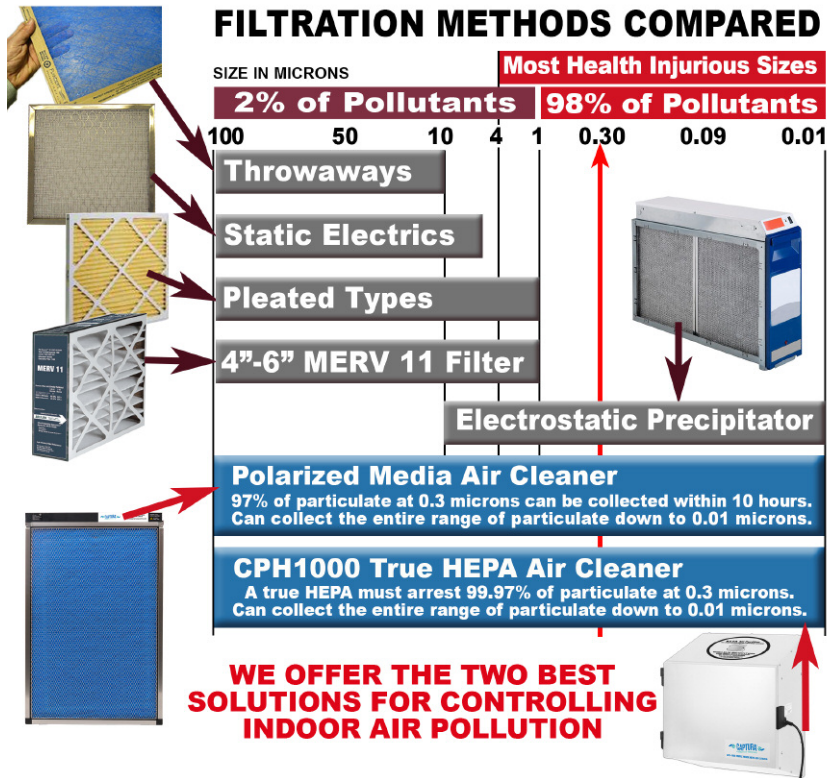
- Improves Air Quality
- Longer lasting! Replace every 6 months (Perfect for service contracts.)
- Lower pressure drop (improved air flow.)
- No blow-by
- Applicable for Attic Installation. No condensation, quiet operation.
- 220 cfm quiet mode is adequate for an average size home. 300 cfm for larger homes or accelerated cleaning of air.
- Zero restriction in return plenum
- Maximizes Space
- Whisper-Like Operation
- Superior performance
- Maintenance-Free Steel Ball Bearings
- Quick and Simple to Install
- Easy to Clean and Maintain
- Extra Convenience
- Extra safety feature
- Reliable and Trouble-Free

Easy Maintenance
modular construction

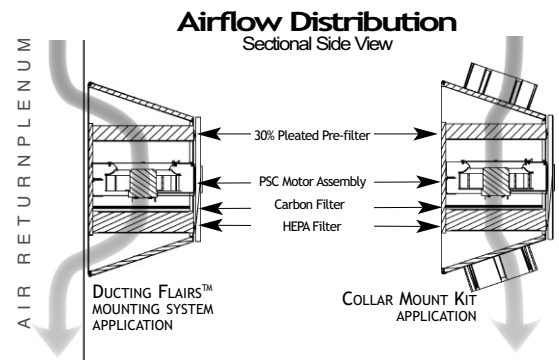


Maintaining the PREMIERONE HEPA Filter is a breeze with this modular construction. The Pre-filter/Carbon Filter and the HEPA Filter are assembled in a sealed modular casing that is designed so the filters can be individually removed for easy maintenance and cleaning. The Motor and Electrical Box are mounted in a galvanized steel module that is easily removable for cleaning purposes.

Why Choose a HEPA Replacement Filter?

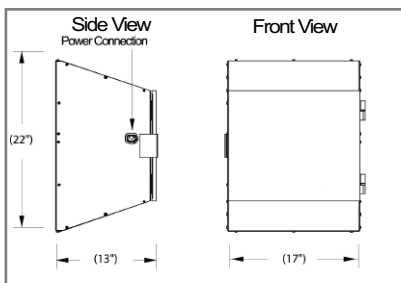


SPECIFICATIONS	Model HEPA HP500
Size (L x W x H)	13" x 17" x 22"
Performance	220/300 CFM
HEPA Filter Size (L x W x H)	12" x 16" x 2.5"
HEPA Filter Type	100% synthetic polyester and polypropylene materials
HEPA Filter Life	2 years
Pre-Filter Size (L x W x H)	12" x 16" x 2"
Pre-Filter Type	Paper
Pre-Filter Life	6 months
Carbon Filter Size (L x W x H)	12" x 16" x 5/8"
Carbon Filter Type	Media Pad
Carbon Filter Life	6 months
Voltage	120 VAC @ 60 Hz
Amperage	1.5 A
Power Consumption	112 W Low 140 W High
Certification	cCSA _{US}

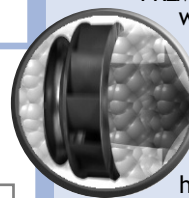
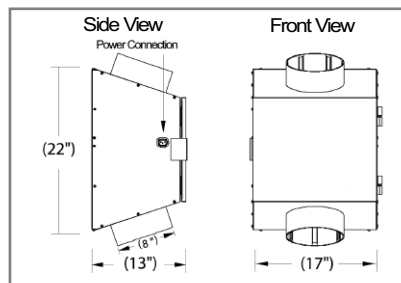


Dimensions and Clearances

Return Plenum Installation



Return Plenum & Stand Alone Installation with Collar Mount kit



APP Design operation system

PREMIERONE HEPA Systems are manufactured with the «Advanced Pull and Push Design» that offers a double sound barrier. The motor pulls the air through the pleated pre-filter and then pushes it through the carbon and HEPA Filter which acts as double sound attenuator. This process is very quiet and provides better whole home comfort.

Optional Accessories for model HP500

CMK500 Collar Mount Kit

- Includes:**
- Two 8 inch plastic collars
 - Mounting hardware
 - Installation, operation and maintenance manual